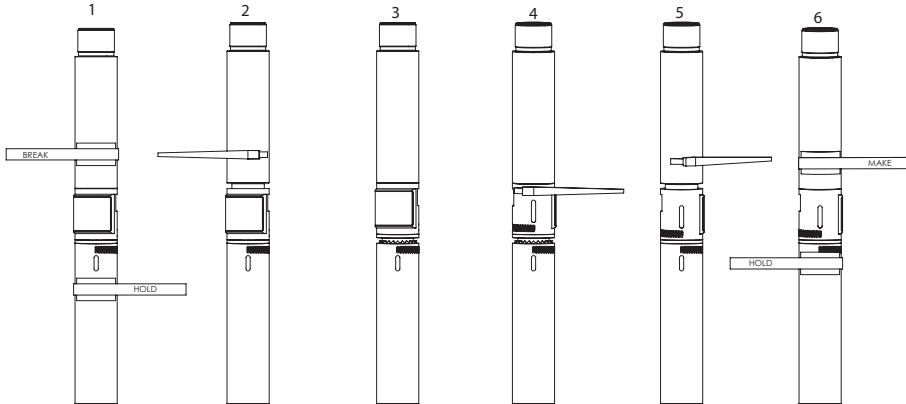


Pick the motor up, and attach the selected bit. If a bent housing adjustment is needed, lower the motor down to the adjustable housing, and make the needed change according to the accompanying setting procedure (see below and on pg. 81).

ADJ Procedure



1. BREAK CONNECTION AS SHOWN
2. CHAIN TONG 3 - 4 TURNS, DO NOT USE ROTARY TABLE
3. RETRACT THE KICK RING
4. CHAIN TONG KICK RING, ALIGN WINDOWS FOR DESIRED SETTING
5. SLIDE KICK RING BACK TO ENGAGE KICK HOUSING, CHAIN TONG SNUG
6. TORQUE TO PROPER SETTING

TOOL TORQUES	3 3/4	5600 Nm	4100 ft. - lb.
	5	16,250 Nm	12,000 ft. - lb.
	6 1/2 - 6 3/4	40,700 Nm	30,000 ft. - lb.
	8	54,000 Nm	40,000 ft. - lb.
	9 5/8	101,700 Nm	75,000 ft. - lb.

Upon completion of the setting procedure, mark the tool face, and slowly lower the motor into the hole, keeping tool face alignment as you go. At this point, you can align and test whatever steering device is to be used, and proceed on in the hole.